



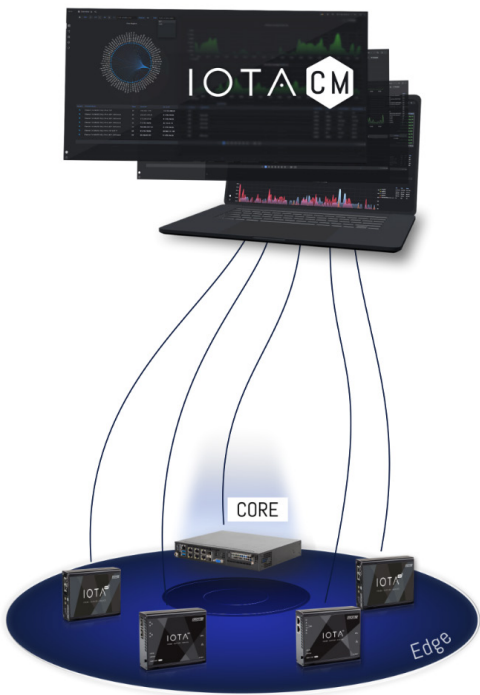
ENHANCED IOTA ANALYTICS AND CENTRALIZED DEVICE MANAGEMENT

IOTA CM is an application for centralized management of IOTA EDGE and CORE devices. Bringing together analytics from all IOTA capture points into a single interface, network administrators can centrally maintain a fleet of IOTA devices and perform advanced measurements, such as multi-segment analysis between capture points.

All IOTA devices capture network traffic locally. IOTA CM pulls metadata from all connected IOTA devices, giving insight into performance metrics from each capture segment and allowing you to get a holistic view of the network and compare specific capture locations for further analysis.

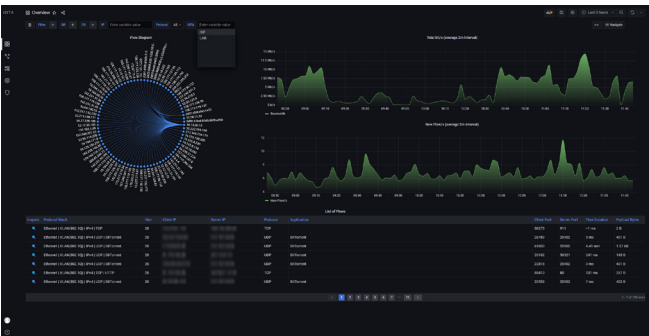
FEATURES

- ▶ At-a-glance supervision of connected devices
- ▶ Easy device fleet management and maintenance
- ▶ Single viewpoint of metadata collected by all IOTA devices
- ▶ Compare metadata from different capture points in a single dashboard
- ▶ Multi-segment analysis: latency measurement between different capture points for edge IOTAs
- ▶ Centralized deployment of firmware updates
- ▶ Container-based deployment for flexible integration in any modern infrastructure



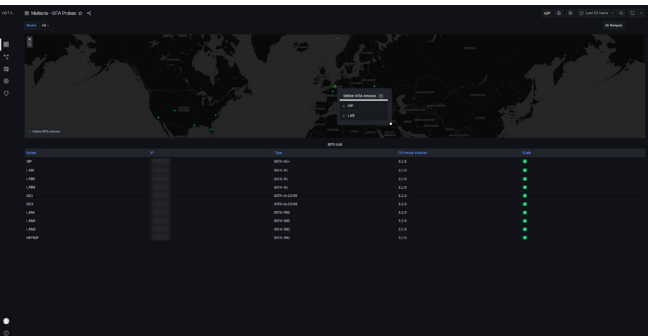
ORDERING INFORMATION

ORDER REFERENCE	DESCRIPTION
IOTA-CM	IOTA Centralized Management



Overview & Comparison

Get a quick aggregated overview of what is happening on all IOTA capture points, with information on top talkers and bandwidth usage.



Multisite IOTA Probes

All connected devices in one overview. This dashboard provides the status, location, and firmware version of all connected IOTAs.